



Lester Grove | Walsall | WS9 0SL

£1,900 PCM



Summary

Webbs Estate Agents are delighted to offer to let this sizable family residence, situated in a sought after location within close proximity to Sutton Coldfield.

Occupying an enviable corner plot, this generous home briefly comprises of; entrance porch, reception hallway, large family lounge, dining room, fitted kitchen, utility room & guest wc.

To the first floor, there are four well proportioned bedrooms, a large en-suite and family bathroom.

Externally, there is a generous fore garden with off road parking for several vehicles and a large garage. To the rear of the property, there is a mature and private enclosed garden with patio seating area.

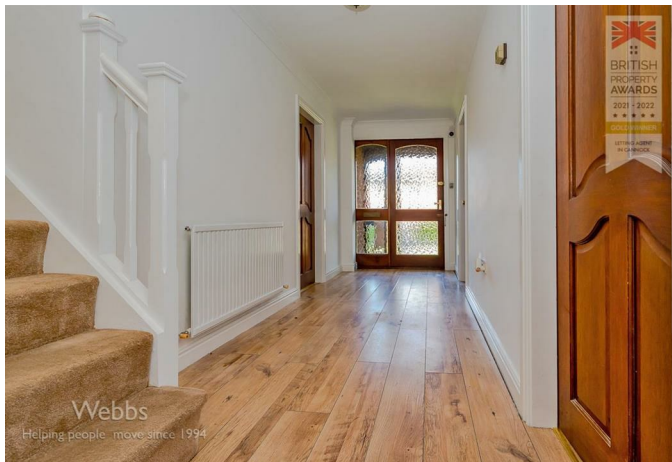
Viewing is essential to fully appreciate both the generous size and desirable positioning of this beautiful home.

Key Features

- Large Detached Residence
- Generous Corner Plot
- Kitchen, Utility & Guest WC
- Large Driveway, Garage & Generous Gardens
- EPC Band E | Council Tax Band G
- Sought After Location
- Lounge & Dining Room
- Four Sizable Bedrooms
- Viewing Highly Recommended
- Holding Deposit £438 | Security Deposit £2192

Rooms and Dimensions





Webbs Estate Agents - endeavour to maintain accurate depictions of properties in Virtual Tours, Floor Plans and descriptions, however, these are intended only as a guide and purchasers must satisfy themselves by personal inspection.

